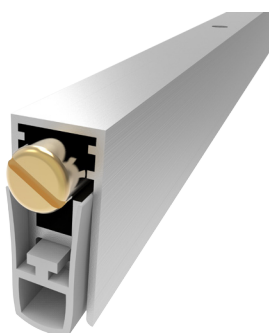


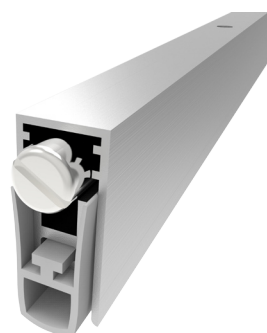
**AUTOMATIC DROP SEALS**  
**MASTER LINE - SERIES 12 MM**

**MAIN APPLICATION**  
**INTERIOR TIMBER DOOR - WOODEN DOOR**  
**ALUMINIUM DOOR - PVC DOOR - SECURITY DOOR**

**DS-103SF30RT**



**DS-103SF30RTN**



SIZE	MAX SEAL GAP	MAX LENGTH	MIN LENGTH
12x27	12	1500	220

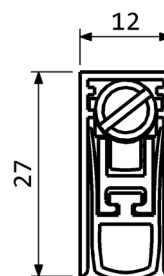
**FEATURES AND FUNCTIONALITY**

Air draughts, light and dust protection	Steel leaf springs mechanism
Barrier-free access	Low door opening and closing resistance
Energy saving	Acoustic insulation up to 48 dB
Durability up to 1000000 cycles	Smoke leakage < 3 m³/m/hr at 25 Pa
Self levelling drop	Suitable for fire doorsets

**MATERIALS**

Profiles	Aluminium alloy
Gasket	Self-extinguish silicone (working temperatures -40°C/+200°C)
Push button	Brass / Nickel plated brass
Mechanism	Steel

CODE	LENGTH mm	TRIMMING mm	BOX PCS
DS-103SF30RT400	400	180	70
DS-103SF30RT600	600	200	70
DS-103SF30RT800	800	200	70
DS-103SF30RT1000	1000	200	70
DS-103SF30RT1200	1200	200	70
DS-103SF30RTN400	400	180	70
DS-103SF30RTN600	600	200	70
DS-103SF30RTN800	800	200	70
DS-103SF30RTN1000	1000	200	70
DS-103SF30RTN1200	1200	200	70



**FIXING ACCESSORIES  
(OPTIONALS)**

**QUICK AND EASY INSTALLATION**

Measure the groove length. Check the product trimming length in the table provided. Cut the seal on the opposite side of the activating plunger. Place the push button on the hinge side. Extract the mechanism and fix the aluminium case into the groove by screws. Reinsert the mechanism up to the locked position. Lateral fixing options: the seal can be fixed through the inox brackets P2050 or the inox end caps P1645.

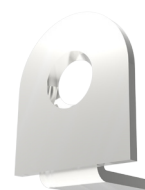
Lift height adjustment: screw (to decrease) or unscrew (to increase) the push button by a flathead screw driver and find the optimal position opening and closing the door while the seal covers the gap along the entire door length.



PLASTIC COUNTER  
PLATE P1830



INOX COUNTER  
PLATE P2045KRV



INOX BRACKETS  
P2050



INOX END CAPS  
P1645

DIMENSIONS IN [mm] - THE MANUFACTURER RESERVES THE RIGHT TO MAKE TECHNICAL CHANGES WITHOUT NOTICE